



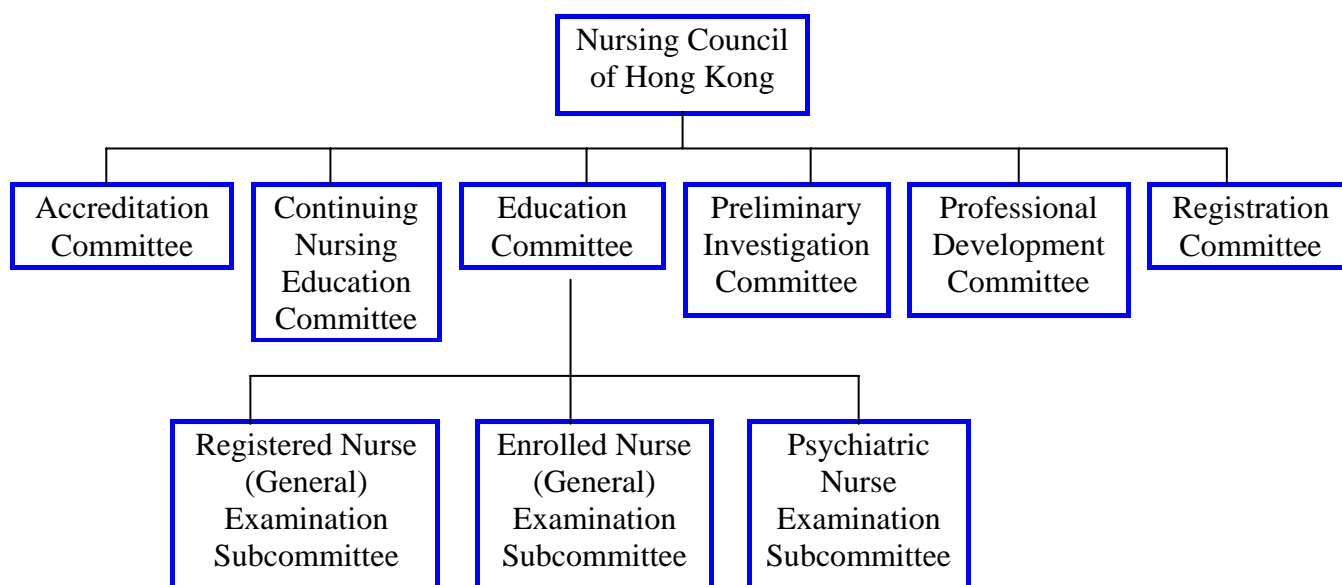
**Nursing Council  
of Hong Kong**

**Annual Report 2005**

## (I) Structure of the Nursing Council of Hong Kong

The Nursing Council of Hong Kong (the Council) is a statutory authority established under the Nurses Registration Ordinance, Cap. 164 (the Ordinance). The Council has an Accreditation Committee, a Continuing Nursing Education Committee, an Education Committee with three Examination Sub-Committees, a Preliminary Investigation Committee, a Professional Development Committee and a Registration Committee to help discharge its functions and to formulate policies and strategies to cope with future developments of the nursing profession.

The organization chart of the Council is as follows: -



## (II) Membership as at 31 December 2005

### Nursing Council

Ms LAI Shuet-fun, Adela	黎雪芬女士	Chairman
Professor CHAN LAU Kit-ching	陳劉潔貞教授	Member
Dr. CHAN Lu-shek, Eric	陳磊石博士	Member
Miss CHAN Shun-kit, Kittie	陳純潔女士	Member
Dr. CHAN Siu-chee, Sophia	陳肇始博士	Member
Professor CHAN Wai-chi, Sally	陳慧慈教授	Member
Miss CHAN Wai-fun, Amy	陳慧芬女士	Member
Ms HO Kam-ha, Georgina	何錦霞女士	Member
Professor HO Pak-chung	何柏松教授	Member
Mr. HUANG Garson Lester, J.P.	黃嘉純先生	Member
Ms KAN Chuen-kow	簡轉球女士	Member
Ms KU Man-wing, Betty	谷敏榮女士	Member
Dr. LEE Kok-long, Joseph	李國麟博士	Member
Professor LEUNG Nai-kong, B.B.S., M.B.E., J.P.	梁乃江教授	Member
Ms LI Yuk-lin, Helena	李玉蓮女士	Member
Mr. LAM Ken-chung, Simon	藍建中先生	Legal Adviser

### Accreditation Committee

Professor LEUNG Nai-kong, B.B.S., M.B.E., J.P.	梁乃江教授	Chairman
Dr. CHAN Siu-chee, Sophia	陳肇始博士	Member
Ms HO Kam-ha, Georgina	何錦霞女士	Member
Ms KAN Chuen-kow	簡轉球女士	Member
Miss CHOW Wai-mui, Anne	周慧梅女士	Co-opted member
Mr. FU Hing-loong, Jack	傅興隆先生	Co-opted member
Professor T.F. LEE, Diana	李子芬教授	Co-opted member
Miss SZETO Oi-chun, Scarlet	司徒愛珍女士	Co-opted member
Professor Frances WONG	黃金月教授	Co-opted member
Miss WONG Sui-ling, Shirley	黃瑞玲女士	Co-opted member
Dr. YUEN Kwan-hok, Felix	阮君岳博士	Co-opted member

### Continuing Nursing Education Committee

Ms LI Yuk-lin, Helena	李玉蓮女士	Chairman
Professor CHAN Wai-chi, Sally	陳慧慈教授	Member
Ms LEUNG Sui-kei, Civy	梁瑞琪女士	Co-opted member
Ms Monita LI	李煥媚女士	Co-opted member
Miss WONG Sui-ling, Shirley	黃瑞玲女士	Co-opted member
Mr. YEUNG Kin-keung, Frederick	楊建強先生	Co-opted member
Mr. YEUNG Yin-lam, Leonard	楊彥林先生	Co-opted member
Mr. YUEN Chi-man, Anders	源志敏先生	Co-opted member

### Education Committee

Professor CHAN Wai-chi, Sally	陳慧慈教授	Chairman
Miss CHAN Shun-kit, Kittie	陳純潔女士	Member
Dr. CHAN Siu-chee, Sophia	陳肇始博士	Member
Ms HO Kam-ha, Georgina	何錦霞女士	Member
Ms LAI Shuet-fun, Adela	黎雪芬女士	Member
Dr. LEE Kok-long, Joseph	李國麟博士	Member
Professor CHUNG Wai-yee, Joanne	鍾慧儀教授	Co-opted member
Mr. FU Hing-loong, Jack	傅興隆先生	Co-opted member
Professor T.F. LEE, Diana	李子芬教授	Co-opted member
Ms LEUNG Wan-ka, Rosanna	梁韻嘉女士	Co-opted member
Ms Monita LI	李煥媚女士	Co-opted member
Miss Manbo MAN	文保蓮女士	Co-opted member
Miss WONG Sui-ling, Shirley	黃瑞玲女士	Co-opted member

### Preliminary Investigation Committee

Ms LAI Shuet-fun, Adela	黎雪芬女士	Chairman
Ms CHEUNG Sau-lan	張秀蘭女士	Member
Ms WONG Wai-kwan, Selina	王惠君女士	Member
Ms WU Ching-yee	胡靜儀女士	Member

### Professional Development Committee

Dr. CHAN Lu-shek, Eric	陳磊石博士	Chairman
Professor CHAN Wai-chi, Sally	陳慧慈教授	Members
Dr. LEE Kok-long, Joseph	李國麟博士	Members
Ms LI Yuk-lin, Helena	李玉蓮女士	Members
Miss CHAN Choy-kam, Sannie	陳彩金女士	Co-opted member
Miss CHING Tai-yin, Patricia	程棣妍女士	Co-opted member
Miss CHONG Yuen-chun	莊婉珍女士	Co-opted member
Miss HO Shuk-chun, Irene	何淑珍女士	Co-opted member
Mr. KWAN Siu-yuk	關兆煜先生	Co-opted member
Miss LAW Kwai-king, Beatrice Virginia	羅桂琮女士	Co-opted member
Miss LI Pui-man, Josephine	李佩文女士	Co-opted member
Dr. MOK SUEN Suk-bing, Esther	莫孫淑冰博士	Co-opted member
Mr. PANG Shu-wing	彭樹榮先生	Co-opted member
Mr. TONG Wah-kun	唐華根先生	Co-opted member
Miss TSANG Sou-wah, Elsa	曾秀華女士	Co-opted member

### Registration Committee

Ms CHAN Shun-kit, Kittie	陳純潔女士	Chairman
Dr. CHAN Lu-shek, Eric	陳磊石博士	Members
Miss CHAN Wai-fun, Amy	陳慧芬女士	Members
Ms HO Kam-ha, Georgina	何錦霞女士	Members
Ms KU Man-wing, Betty	谷敏榮女士	Members
Ms CHAN Yuet-kwai	陳月桂女士	Co-opted member
Ms CHEUNG Kit-chiu, Elizabeth	張潔昭女士	Co-opted member
Miss SIU Po-kwan, Gertrude	蕭寶君女士	Co-opted member
Mr. Alan WONG	黃成輝先生	Co-opted member
Ms Cynthia WONG	王樹蓉女士	Co-opted member
Professor Frances WONG	黃金月教授	Co-opted member
Miss WONG Sui-ling, Shirley	黃瑞玲女士	Co-opted member

### Registered Nurse (General) Examination Sub-committee

Ms LAI Shuet-fun, Adela	黎雪芬女士	Chairman
Dr. CHAN Siu-chee, Sophia	陳肇始博士	Member
Dr. LEE Kok-long, Joseph	李國麟博士	Member
Professor Janita P C CHAU	周柏珍教授	Co-opted member
Dr. SIT Wing-hung, Janet	薛詠紅博士	Co-opted member
Dr. Agnes TIWARI	羅鳳儀博士	Co-opted member
Ms WAN Wai-ling, Agnes	溫惠玲女士	Co-opted member
Miss WONG Sui-ling, Shirley	黃瑞玲女士	Co-opted member
Ms YUK Tak-kwan, Betty	郁德坤女士	Co-opted member

Enrolled Nurse (General) Examination Sub-committee

Ms KAN Chuen-kow	簡轉球女士	Chairman
Miss CHAN Shun-kit, Kittie	陳純潔女士	Member
Miss CHAN Kit-yun	陳潔潤女士	Co-opted member
Miss CHAN Sein-har, Olive	陳倩霞女士	Co-opted member
Ms CHAN Wai-kam	陳惠琴女士	Co-opted member
Mr. CHAN Wai-man, Raymond	陳偉文先生	Co-opted member
Miss CHING Tai-yin, Patricia	程棣妍女士	Co-opted member
Mr. TANG Kam-chuen	鄧錦泉先生	Co-opted member
Miss TO Kwai-lin, Flora	杜桂蓮女士	Co-opted member

Psychiatric Nurse Examination Sub-committee

Professor CHAN Wai-chi, Sally	陳慧慈教授	Chairman
Ms KU Man-wing, Betty	谷敏榮女士	Member
Professor CHIEN Wai-tong	錢惠堂教授	Co-opted member
Mr. FU Hing-loong, Jack	傅興隆先生	Co-opted member
Mr. KWONG Ying-yau, Kanny	鄺應祐先生	Co-opted member
Mr. LAI Moon-chiu, Peter	黎滿朝先生	Co-opted member
Mr. LEUNG Kang-kai, Oliver	梁景佳先生	Co-opted member
Ms LEUNG Sau-fong	梁秀芳女士	Co-opted member
Mr. NG Wai-keung, Roger	吳偉強先生	Co-opted member
Mr. PANG Shu-wing	彭樹榮先生	Co-opted member
Miss TAI Yuk-hing, Jade	戴玉卿女士	Co-opted member
Mr. Alan TSANG	曾日坤先生	Co-opted member
Dr. YUEN Kwan-hok, Felix	阮君岳先生	Co-opted member

**(III) No. of nurses who had renewed their practising certificates during the period from 1 January 2005 to 31 December 2005**

Category	No.	Sub-total
Registered Nurse (General)	16,715	17,921
Registered Nurse (Psychiatric)	1,194	
Registered Nurse (Sick Children)	4	
Registered Nurse (Mentally Subnormal)	8	
Enrolled Nurse (General)	1,020	1,137
Enrolled Nurse (Psychiatric)	117	
	<b>Total:</b>	19,058

(IV) **No. of nurses newly registered/enrolled during the period from 1 January 2005 to 31 December 2005**

Category	Local Trained	Non-local Trained	Sub-total	
Registered Nurse (General)	732	30	762	809
Registered Nurse (Psychiatric)	47	0	47	
Registered Nurse (Sick Children)	0	0	0	
Registered Nurse (Mentally Subnormal)	0	0	0	
Enrolled Nurse (General)	0	18	18	18
Enrolled Nurse (Psychiatric)	0	0	0	
<b>Total:</b>	779	48	827	

(V) **No. of nurses maintained in the register of nurses/roll of enrolled nurses as at 31 December 2005**

Category	No.	Sub-total
Registered Nurse (General)	24,168	25,947
Registered Nurse (Psychiatric)	1,765	
Registered Nurse (Sick Children)	4	
Registered Nurse (Mentally Subnormal)	10	
Enrolled Nurse (General)	8,590	9,518
Enrolled Nurse (Psychiatric)	928	
<b>Total:</b>		35,465

(VI) **List of core-competencies for nurses developed during the period from 1 January 2005 to 31 December 2005**

List of core-competencies		Date
(1)	Core-competencies for Registered Nurses (General) (Chinese version)	August 2005
(2)	Core-competencies for Registered Nurses (Psychiatric) (English version)	December 2005
(3)	Core-competencies for Enrolled Nurses (General) & A Reference Guide to the Syllabus of Subjects and Requirements for the Preparation of Enrolled Nurse (General) in the Hong Kong Special Administrative Region (English version)	September 2005

The documents can be downloaded from the Council's website at <http://www.nchk.org.hk>.

**(VII) Licensing Examinations for registration and enrolment conducted during the period from 1 January 2005 to 31 December 2005**

**Licensing Examination for Part I (General) Registration**

	No. of Candidates Attempted		Passing Rate (%)	
	Local Trained	Non-local Trained	Local Trained	Non-local Trained
March 2005 Practical Examination	-	13	-	0 (0%)
September 2005 Written Examination	-	41	-	11 (26.83%)

**Licensing Examination for Part II (Psychiatric) Registration**

	No. of Candidates Attempted		Passing Rate (%)	
	Local Trained	Non-local Trained	Local Trained	Non-local Trained
September 2005 Written Examination	-	1	-	1 (100%)

**Licensing Examination for Part I (General) Enrolment**

	No. of Candidates Attempted		Passing Rate (%)	
	Local Trained	Non-local Trained	Local Trained	Non-local Trained
March 2005 Written Examination	-	32	-	19 (59.38%)
August 2005 Practical Examination	-	35	-	18 (51.43%)

**(VIII) Complaints against nurses received during the period from 1 January 2005 to 31 December 2005**

During the year 2005, the Council has received 27 complaints.

**(IX) Inquiries held during the period from 1 January 2005 to 31 December 2005**

During the year 2005, five inquiries had been held by the Council to consider four disciplinary cases.

## **(X) Requirements on practising certificates**

A registered nurse (RN) or an enrolled nurse (EN) shall not practise nursing in Hong Kong unless he/she is the holder of a valid practising certificate issued by the Council.

The fee for a practising certificate is \$200.

A practising certificate is normally valid for 3 years from 1 January of the first year to 31 December of the third year. For a nurse who is newly registered/enrolled in a year, his/her practising certificate will be valid from the date of its issue until 31 December of the third year commencing on 1 January of the year of issue.

The holder of a current practising certificate may apply in writing to the Secretariat for a replacement copy, if the original practising certificate is lost, destroyed or defaced. The fee for a replacement copy of a practising certificate is HK\$175.

RNs and ENs should apply for renewal of their practising certificates when expire. The Secretariat would take the initiative to remind practising certificate holders to renew their practising certificates in writing to their last known address a few months before renewal is due. Hence, RNs and ENs should inform the Council whenever they change their correspondence address.

According to sections 7(3)(e) and 13(3)(e) of the Ordinance, the Council may direct that the name of any nurse be removed from the register of nurses (“the register”) or roll of enrolled nurses (“the roll”) who has failed to obtain a practising certificate issued within 6 months of his/her registration/enrolment or of the expiry of such a practising certificate.

In September 2005, the Council issued a letter to all RNs and ENs by registered mail to their last known addresses notifying that retention of names in the register without practising certificates was not permitted and that procedures would be taken to remove their names from the register/roll without further notice if they failed to obtain practising certificate before the deadline in October 2005.

Since the Council did not receive the application for a practising certificate from 10,067 nurses (7,108 RNs and 2,959 ENs) before the deadline, their names were removed from the register/roll on 1 November 2005. On 1 December 2005, the Council had issued another letter to 10,067 nurses whose names were removed. The Council had also published a notice of removal of names from the register/roll in the Government Gazette.

Nevertheless, nurses whose names being removed may apply for restoration of their names to the register. The application form can be downloaded from the Council’s web site. According to section 21(4) of the Ordinance, the Council may, in its absolute discretion, and after such inquiry and subject to such conditions as it may consider appropriate, either allow or reject the application.

**(XI) List of providers for the Continuing Nursing Education (CNE) system accredited during the period from 1 January 2005 to 31 December 2005**

<b>List of Accredited CNE Provider</b>		<b>Accreditation Period</b>
(1)	Hospital Authority	1 December 2005 to 30 November 2008
(2)	Department of Health	
(3)	Centre for Health Promotion of the Department of Nursing Studies, the Chinese University of Hong Kong	
(4)	The Nethersole School of Nursing, the Chinese University of Hong Kong	
(5)	School of Nursing, the Hong Kong Polytechnic University	
(6)	College of Nursing, Hong Kong	
(7)	Hong Kong College of Mental Health Nursing	
(8)	Hong Kong Society for Nursing Education	
(9)	Association of Hong Kong Nursing Staff	
(10)	Nurses' Branch, Hong Kong Chinese Civil Servants' Association	

**(XII) List of Nursing programmes accredited during the period from 1 January 2005 to 31 December 2005**

The Council had not granted accreditation to any nursing programmes during the period from 1 January 2005 to 31 December 2005.

**~ End ~**